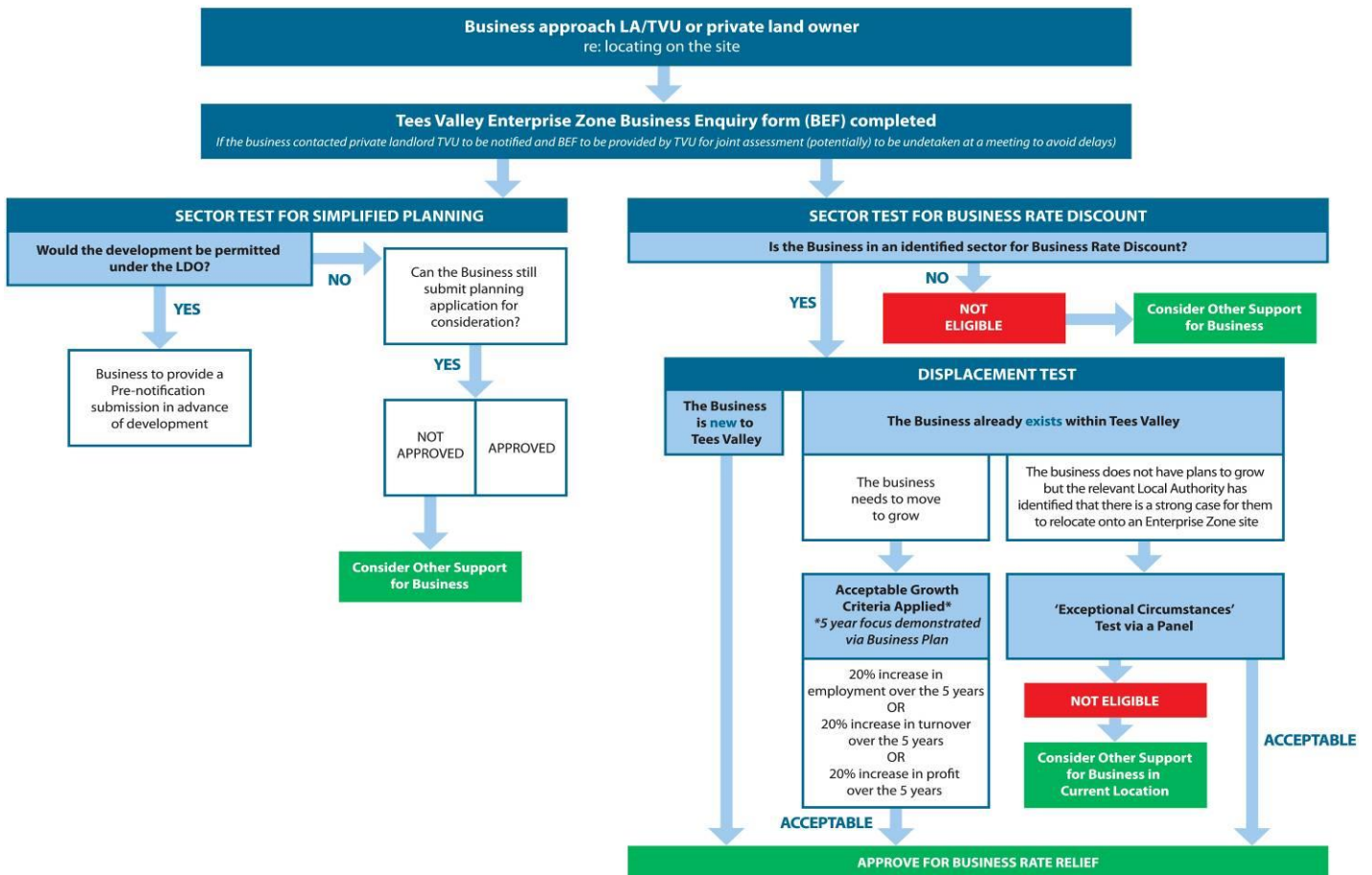


Tees Valley Enterprise Zone

Business Rate Relief

Eligibility Criteria

Process for considering Eligibility of Businesses for Simplified Planning & BRR



Growth Criteria for Existing Businesses

Companies that have demonstrated that they belong to one of the Enterprise Zone sectors and are already located in the Tees Valley, need to demonstrate how they intend to grow over the next five years. In particular we are looking for businesses to demonstrate they intend to meet one the following criteria:

20% increase in employment over the 5 years

OR

20% increase in turnover over the 5 years

OR

20% increase in profit over the 5 years

OR

Combined 20% from all/mixture of above