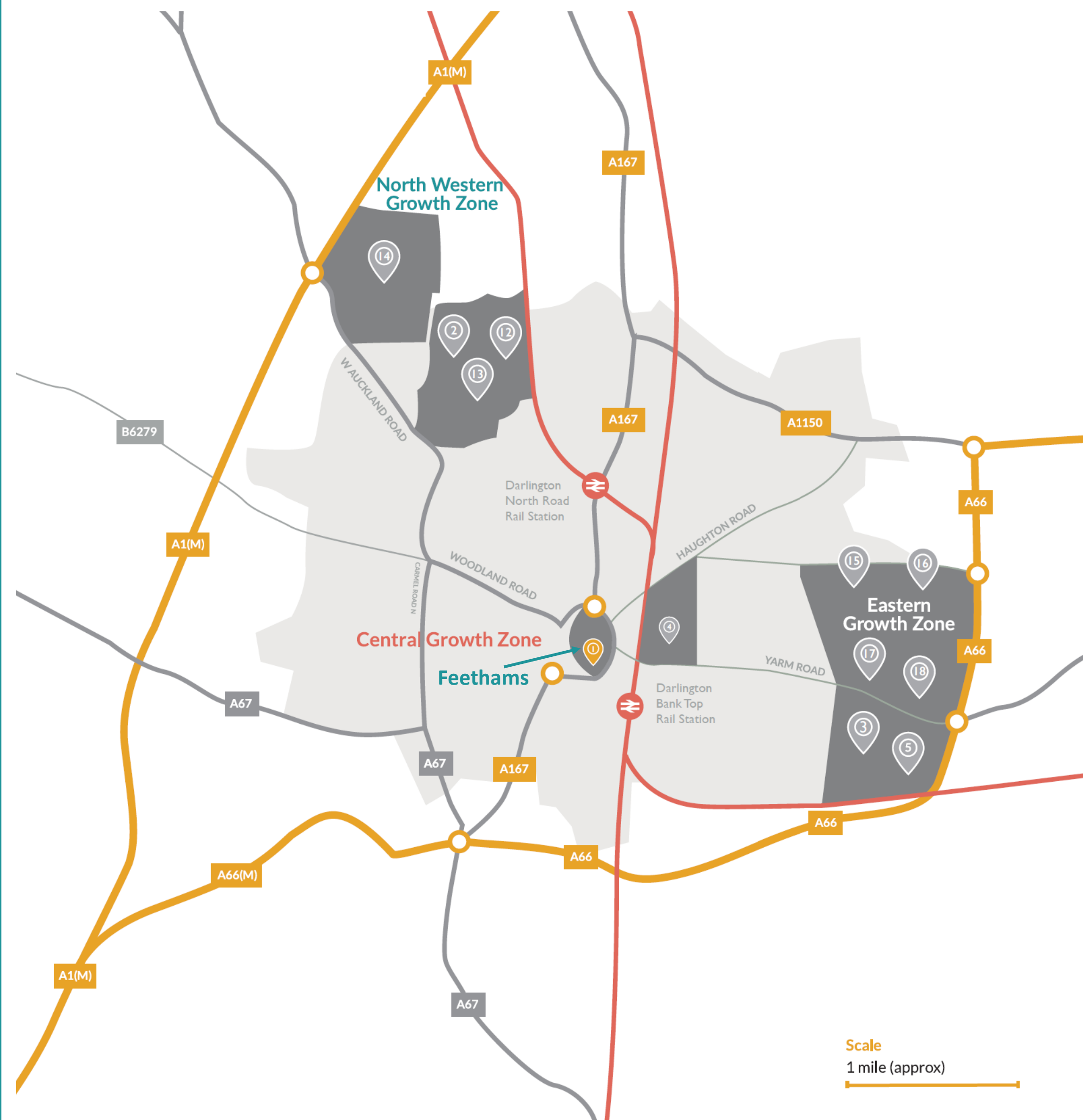
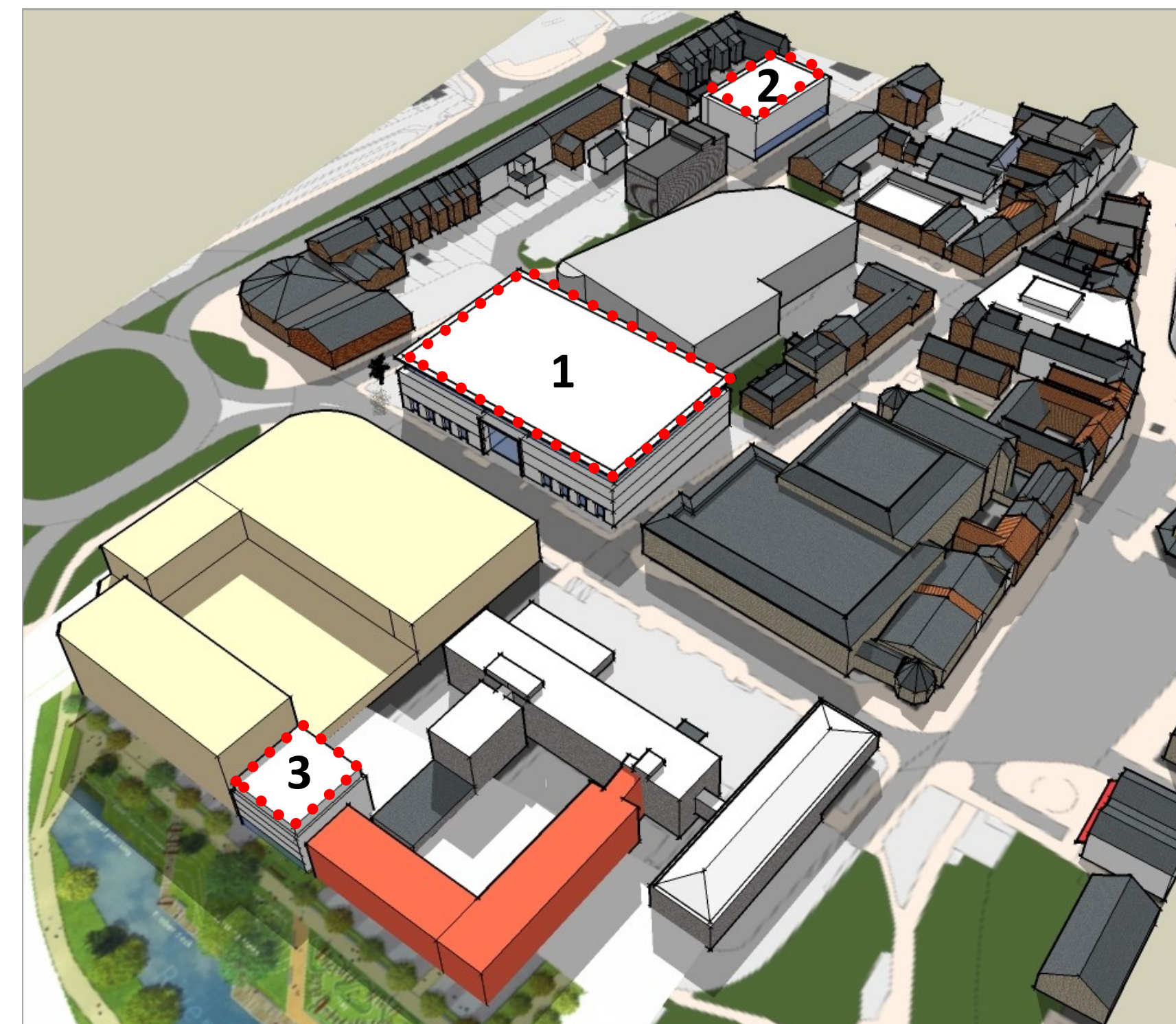




## Location Map



## Site Map



## Key facts

### Area

- Plot 1 = 1 Acre (4047m<sup>2</sup>)
- Plot 2 = 0.18 Acres (750m<sup>2</sup>)
- Plot 3 = 0.08 Acres (352m<sup>2</sup>)

### Location

Town centre

### Coordinates

54°31'22.2"N 1°33'14.3"W

### Topography

Urban

## About the plots

Feethams is a prime leisure and hospitality site as well as providing broader opportunities within the retail and business service sector. Feethams benefits from a recently completed Grade A office development, home to the Department for Education, a new 650 space multi-storey car park, and a soon to be completed leisure development comprising a seven screen multiplex cinema and nine restaurants. A new riverside park will be delivered over the next 12 months creating a much improved walking link to Darlington's main line rail station which is just 5 minutes away.